

Command Tooling Systems LLC PIONEERING AMERICAN-DRIVEN TOOLS FOR SWISS MACHINES



Command is celebrating 30 years in business and the launch of driven tools for Swiss machines.

The Swiss may have set the standard for quality tools, but one American company is determined to surpass it. Command Tooling Systems LLC is launching a line of driven tools for Swiss machines that are designed, manufactured and serviced in Ramsey, Minnesota, USA.

The tools were developed in cooperation with local medical manufacturers as well as Command's parent company, EWS Tool Technologies of Uhingen, Germany. EWS has more than 50 years of experience in the industry and provides over 30,000 static and live tools for more than 100 machine builders worldwide.

Under the direction of Chuck Berg, Command's director of engineering and manufacturing, Command's engineering team designed a new line of high-quality, durable tools with close-to-perfect run-out needed for the manufacturing of medical parts.

"We have reached goals and provided design features required by users in the medical industry," said Bahti Hanedar, vice president of sales and marketing. "In addition, we are making accessories for our driven tools that will make it easier for users to overcome obstacles during setups."

The tools will be launched in September at the EMO tradeshow in Hannover, Germany.

One Stop Shop, Superior Service, Made in the U.S.A.

Command Tooling offers an extensive variety of products to service the needs of the manufacturing community. Toolholders for milling machines offered by Command are made in the U.S.A. Turret tools for turning machines are made in Germany and are provided by Command's parent company, EWS. Reamer and boring applications are all Swiss-made by Urma, Command's long time partner. Specialized tools from EWS and Urma are now being manufactured in the Ramsey, Minn. facility.

"We have purchased new equipment and robotics to expand and update our machining capabilities," said Nick Martin, president. "These investments allow us to compete with other countries and maintain superior quality, while giving us the ability to manufacture locally and contribute to our community."

**I'd recommend
Command based on
their excellent quality,
fair pricing and fast
response time.**

- John Dickes, manager of
manufacturing engineering,
Mate Precision Tooling

Command provides an in-house maintenance and repair program supporting EWS and Urma products. Driven tools for Swiss machines also will be supported after their launch in September. The new driven tooling will have a turnaround time of 48 hours for maintenance.

"By adding driven tooling to our product family we are proud to say that 'Made in the U.S.A.' is our focus," Hanedar said. "We know how important it is to support tooling needs locally, both from an application and service aspect. Having an experienced staff helps us accomplish that."

Strong Partnerships

Command Tooling is pleased to have been selected as a "Tooling Partner" in DMG/Mori Seiki's DMSQP program. The DMSQP program was created by DMG/Mori Seiki to ensure that all peripheral equipment used on its lathes and machining centers meet strict requirements for quality and performance.

In addition to the DMSQP program, Command also is a member of Partners in THINC through Okuma. The THINC program gives partners the ability to produce and test real-time solutions at a single location, meaning the same solutions can also be quickly replicated on any machine shop floor—anywhere in the world.

Celebrating 30 Years ... and a New Future

This year Command celebrates 30 years in business, as well as a 25 percent increase in growth over the previous year. It recently hired additional sales representatives for better coverage throughout the United States, Mexico and Canada. And it will be launching a new Web site with an updated brand to better reflect its vision in becoming the market leader in precision tool holding.

"Our customers have high expectations," Martin said. "And so do we."



The *Worldwide Tooling Technology Leader*

More Than 100 Years Combined Industry Experience

Tooling & Accessories

BT • CT • DIN 30-60 • HSK25-HSK125
Standard & Shrink-Fit* Holders



Precision Test Bars
Drawbar Dynamometer
Retention Knobs &
Taper Checker



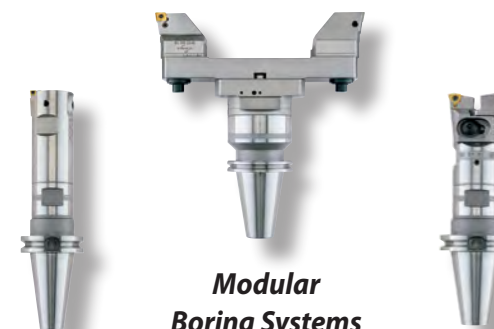
*ThermoLock® Shrink-Fit Toolholders With Shrinker® Technology
Shrinker® Is A Registered Trademark Of Tooling Innovations, Dana Point, CA

URMA Boring Systems & Reamers

CircoTec RX High Performance Reamers

The ONLY Solid Carbide/Cermet System
For Diameters 0.468"-3.960"
(12mm-100.6mm)

**60% Less
Set-Up Time**

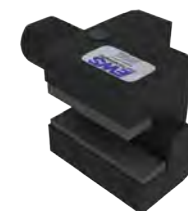


**Modular
Boring Systems**
Roughing & Finishing Ø's From
.040"-31.7" (1-805mm) In Stock

EWS Driven & Static Toolholders

The Most Complete Lathe Tooling Line Available Worldwide

More Than 30,000 Live & Static Tools
For Over 100 Different Machine Brands



VDI 16-VDI 80 • BMT 40-BMT 110
Multi-tasking Machine Tooling & Specials

Command Tooling Systems • Phone 800.328.2197 • Fax 800.555.7694
Web www.commandtool.com • E-mail support@commandtool.com